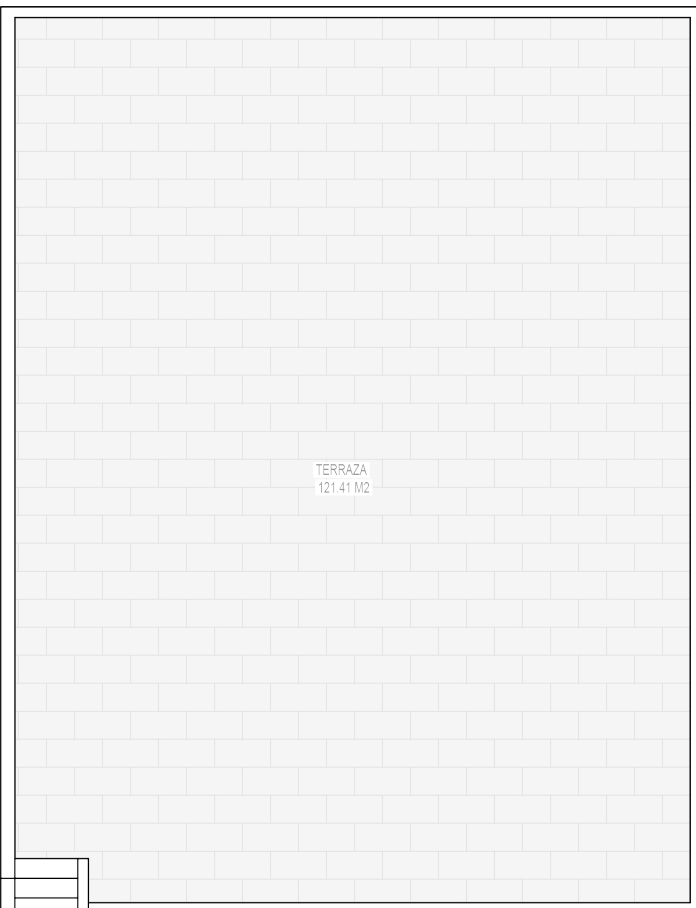


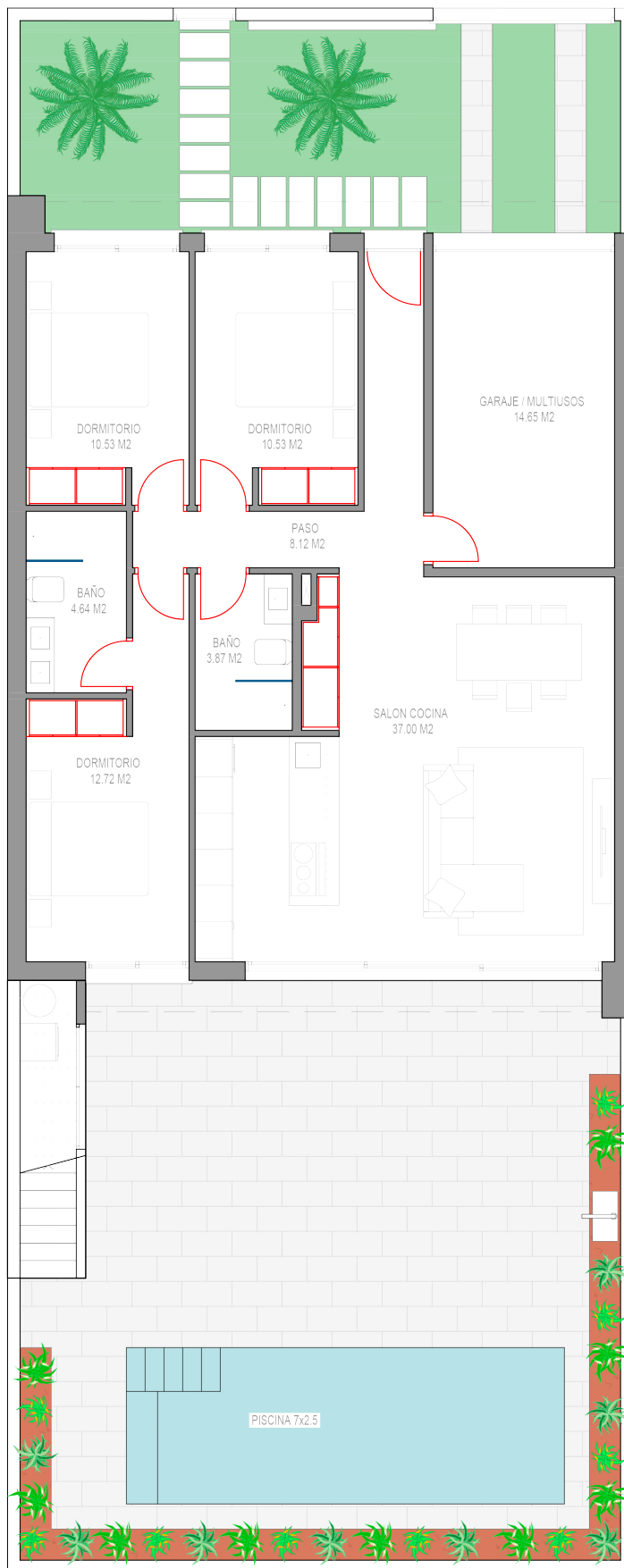
# VILLA SQUARE GARAGE 132m<sup>2</sup> PLOT 250m<sup>2</sup>



TERRAZA  
121.41 M<sup>2</sup>

449.900 €

\*Este plano es indicativo y puede variar respecto a lo ejecutado.  
\*This plan is indicative and may change with respect to the execution.



DORMITORIO  
10.53 M<sup>2</sup>

DORMITORIO  
10.53 M<sup>2</sup>

GARAJE / MULTUSOS  
14.65 M<sup>2</sup>

PASO  
8.12 M<sup>2</sup>

BAÑO  
4.64 M<sup>2</sup>

BAÑO  
3.67 M<sup>2</sup>

SALON COCINA  
37.00 M<sup>2</sup>

DORMITORIO  
12.72 M<sup>2</sup>

PISCINA 7x2.5